

**LDA** *direct*

[www.LDAdirect.be](http://www.LDAdirect.be)



**E.MC productrange**

[www.LDA.be](http://www.LDA.be)



Visit our corporate website for more general information concerning LDA NV. On this website, you will also find basic information concerning our product ranges and our suppliers.



[www.LDAdirect.be](http://www.LDAdirect.be)



Visit our webshop for standard products. See immediately the prices, and order your products online. All products on [www.LDAdirect.be](http://www.LDAdirect.be) are kept on stock for a quick delivery.



[products.LDA.be](http://products.LDA.be)

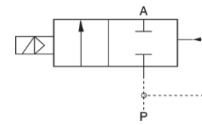


Visit our technical website in order to learn about our specialised, products. Download all necessary technical documentation, installation and calculation guides. All this information is available for free!



[www.LDAdirect.be](http://www.LDAdirect.be)  
[LDAdirect@LDA.be](mailto:LDAdirect@LDA.be)  
+32 (0)2 669 68 00

Visit our websites!



**TECHNICAL SPECIFICATIONS**

Media: Water, light oil, air  
 Temperature range: -10°C -> +80°C  
 Ambient temperature: -10°C -> +50°C  
 Body Material: Brass or SS316

**Ordering information**

Series	Orifice	Port size	Valve Body	Orifice (mm)	Voltage
EMC 2 port 2 position	001: 1mm	06: 1/8"	A: 20x25mm	Blank: NBR	E1 = 110 AC
	002: 2mm	08: 1/4"	B: 32x32mm	V: Viton	E2 = 230 AC
	002: 3mm	10: 3/8"	C: 32x46mm	E: EPDM	E4 = 24 DC
	003: 4mm	15: 1/2"			E5 = 12 DC
	004: 4mm				
	005: 5mm				
	006: 6mm				

**Order Examples:**

**EMC22001-06AE2** => EMC 2 port direct acting series, orifice: 1mm, 1/8" port size, body size 20x25mm, NBR seal , 220VAC

**Product features**

- Normally Closed, Brass Body
- Multiple seals for different medium.
- Orifice size range from 1mm to 6mm
- Direct acting solenoid valve

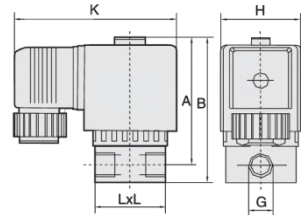
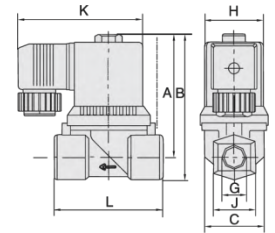
The EMC series (Burkert type) solenoid valves are very popular around the world with the wide range of thread sizes from 1/8" to 2". EMC solenoid valves are suitable for different working pressure, working temperature, and working mediums. The small EMC direct acting valves are available in 2/2 and 3/2 way, normal close and normal open type, the bigger pilot diaphragm series valves are available in stainless steel or brass body in N.C. and N.O (optional for some model), high temperature and high pressure .....

## Specifications

Model N°	EMC22001-06AE2	EMC22002-06AE2	EMC22001-06BE2	EMC22002-06BE2	EMC22003-06BE2	EMC22003-08CE2	EMC22004-08CE2	EMC22005-08CE2	EMC22006-08/10/15E2
Working medium	Air, water, oil								
Acting Type	Pilot Operated								
Orifice	1	2	1	2	3	3	4	5	6
Flow kv (L/min)	0,34	1,33	0,34	1,33	2,75	2,75	4,31	5,51	9,30
Port size	1/8	1/8	1/8	1/8	1/8	1/4	1/4	1/4	1/4 - 1/2
Working Pressure	0-8	0-6	0-4	0-25	0-10	0-10	0-6	0-3	0-2
Guaranteed Press.	12	9	6	37	15	15	9	4.5	3
Voltage Range	-15% +10%								
Working Temp. (C°)	Min -5 C°, Max. 80 C°								
Valve Body material	Brass								
Seal material	NBR								

## Dimensions

Model	G	LXL	K	A	B	C	H	J
EMC22001-06A	1/8	20x25	59	49	56	-	22	-
EMC22002-06A	1/8	20x25	59	49	56	-	22	-
EMC22001-06B	1/8	32x32	76	59	67	-	36	-
EMC22002-06B	1/8	32x32	76	59	67	-	36	-
EMC22003-06B	1/4	32x32	76	59	67	-	36	-
EMC22003-08C	1/4	32x46	76	60	69	-	36	-
EMC22004-08C	1/4	32x46	76	60	69	-	36	-
EMC22005-08C	1/4	32x46	76	60	69	-	36	-
EMC22006-08/10/15	1/4-1/2	50	76	71	85	38	36	26



### LIABILITY:

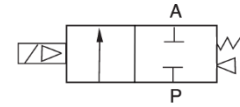
The information available on these pages is provided solely for information purposes regarding LDA Direct (LDA) and the services offered by LDA Direct (LDA). These pages contain no advice.

LDA Direct (LDA) makes all reasonable efforts to ensure that the information on these pages is accurate at the time of inclusion, but at any particular time there may be inaccuracies, omissions or information which is not up-to-date - such as pricing and technical information - and for which LDA Direct (LDA) cannot be held liable.

LDA Direct (LDA) reserves the right to add, delete, correct or otherwise change any part of the information contained on these pages without notice or liability.

With respect to the information available on these pages, LDA Direct (LDA) expressly excludes any representation or warranty (express or implied) to the fullest extent permitted by law. LDA Direct (LDA) accepts no liability for any direct or indirect damages.

## SLP-Series: 2/2 way Pilot Operated Solenoid Valves



### TECHNICAL SPECIFICATIONS

Media:	Water, light oil, air
Temperature range:	-10°C -> +80°C
Ambient temperature:	-10°C -> +50°C
Body Material:	Brass or SS316

### Ordering information

Series	Port Size DN / NPS	Seal Compound	Voltage	Orifice (mm)	Valve Body Material	Control
SLP	06: 1/8"	Blank: NBR	E1 = 110 AC	1L : 1.0	Blank: Brass	Blank: NC
	08: 1/4"	V: Viton	E2 = 230 AC	1.5L : 1.5	S1: Stainless 316	H: NO
	10: 3/8"	E: EPDM	E3 = 380 AC	2.5L : 2.5		
	15: 1/2"		E4 = 24 DC	3L : 3.0		
	20: 3/4"		E5 = 12 DC	4L : 4.0		
	25: 1"		E7 = 24 AC	5L : 5.0		
	35: 1-1/4"		E8 = 110 DC	6L : 6.0		
	40: 1-1/2"		E9 = 48 DC	10L : 10.0		
	50: 2"			10.5L : 10.5		
	F: flange			13L : 13.0		
				20L : 20.0		
				25L : 25.0		
				35L : 35.0		
			40L : 40.0			
			50L : 50.0			

#### Order Examples:

**SLP06 -E1-3L** => SLP series, 2 port, 2 positions, 1/8" port size, NBR seal, 110VAC, Orifice: 3mm, Brass valve body, Normal Closed.

**SLP10V-E2-13LS1H** => SLP series, 2 port, 2 positions, 3/8" port size, Viton seal, 220VAC, Orifice: 13mm, SS body, Normal Open.

#### Product features

- Multiple seals for different medium.
- Wide size range from 1/8" to 2", with both thread and **flanged** connection.
- Diaphragm pilot solenoid operated valve with low working pressure.

SPL-series valves support high working pressures 13 bar, from 1/8" to 2" connections, SLP valves has now a complete range of sizes for your applications, including brass and stainless steel valve, both are available in normally open or closed, applicable for many kinds of medium like air, gas, water, hot water, and other liquids.

# SLP-Series: 2/2 way Pilot Operated Solenoid Valves

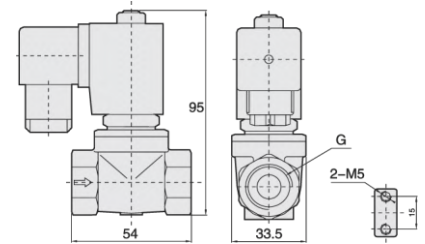
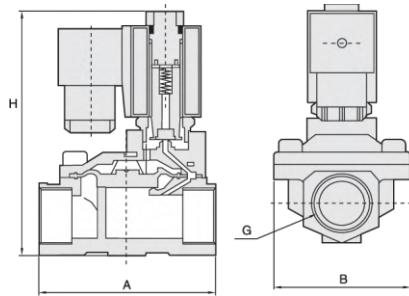
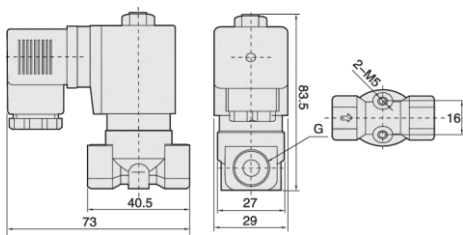


Port size	Orifice (mm)	Flow (kv) L/Min	Pressure Difference (Bar)				Max. Medium temp.	Power		220VAC 50/60Hz		Main dimension
			Min. Pressure	Max. working pressure				VA	W	Brass	Stainless Steel	
				Air / Gas	Liquid / Hot Water	light oil ≤ 20CSTT						AC 230V
								Length - width - height				
1/8"	3	3,29	0	13	13	10	80	22	13	SLP06E2-3L	SLP06E2-3LS1	-
	3	3,29	0	13	13	-	130	22	13	SLP06EE2-3L	SLP06EE2-3LS1	-
	3	3,29	0	13	13	10	120	22	13	SLP06VE2-3L	SLP06VE2-3LS1	-
1/4"	3	3,29	0	13	13	10	80	22	13	SLP08E2-3L	SLP08E2-3LS1	-
	3	3,29	0	13	13	-	130	22	13	SLP08EE2-3L	SLP08EE2-3LS1	-
	3	3,29	0	13	13	10	120	22	13	SLP08VE2-3L	SLP08VE2-3LS1	-
	10,5	21	0	16	16	13	80	22	13	SLP08E2-10.5L	-	-
	10,5	21	0	16	16	-	130	22	13	SLP08EE2-10.5L	-	-
	10,5	21	0	16	16	13	120	22	13	SLP08VE2-10.5L	-	-
3/8"	3	4,29	0	13	13	10	80	22	13	SLP10E2-3L	SLP10E2-3LS1	-
	3	4,29	0	13	13	10	130	22	13	SLP10EE2-3L	SLP10EE2-3LS1	-
	3	4,29	0	13	13	10	120	22	13	SLP10VE2-3L	SLP10VE2-3LS1	-
	4	8,58	0	8	8	6	80	22	13	SLP10E2-4L	SLP10E2-4LS1	-
	4	8,58	0	8	8	6	130	22	13	SLP10EE2-4L	SLP10EE2-4LS1	-
	4	8,58	0	8	8	6	120	22	13	SLP10VE2-4L	SLP10VE2-4LS1	-
	10,5	24	0	16	16	13	80	22	13	SLP10E2-10.5L	-	-
	10,5	24	0	16	16	-	130	22	13	SLP10EE2-10.5L	-	-
	10,5	24	0	16	16	13	120	22	13	SLP10VE2-10.5L	-	-
	13	64	0,5	16	16	13	80	22	13	SLP10E2-13L	SLP10E2-13LS1	66x48x112
1/2"	10,5	25	0	16	16	13	80	22	13	SLP15E2-10.5L	-	-
	10,5	25	0	16	16	-	130	22	13	SLP15EE2-10.5L	-	-
	10,5	25	0	16	16	13	120	22	13	SLP15VE2-10.5L	-	-
	13	64	0,5	16	16	13	80	22	13	SLP15E2-13L	SLP15E2-13LS1	66x48x112
	13	64	0,5	16	16		130	22	13	SLP15EE2-13L	SLP15EE2-13L81	66x48x112
	13	64	0,5	16	16	13	120	22	13	SLP15VE2-13L	SLP15VE2-13LS1	66x48x112
3/4"	20	109	0,5	16	16	13	80	22	13	SLP-20E2	SLP-20E2S1	75x58x118
	20	109	0,5	16	16		130	22	13	SLP-20EE2	SLP-20EE2S1	75x58x118
	20	109	0,5	16	16	13	120	22	13	SLP-20VE2	SLP-20VE2S1	75x58x118
1"	25	172	0,5	16	16	13	80	22	13	SLP-25E2	SLP-25E2S1	96x70x131
	25	172	0,5	16	16		130	22	13	SLP-25EE2	SLP-25EE2S1	96x70x131
	25	172	0,5	16	16	13	120	22	13	SLP-25VE2	SLP-25VE2S1	96x70x131
1-1/4"	35	315	0,5	16	16	13	80	22	13	SLP-35E2	SLP-35E2S1	131x96x146
	35	315	0,5	16	16		130	22	13	SLP-35EE2	SLP-35EE2S1	131x96x146
	35	315	0,5	16	16	13	120	22	13	SLP-35VE2	SLP-35VE2S1	131x96x146
1-1/2"	40	429	0,5	16	16	13	80	22	13	SLP-40E2	SLP-40E2S1	131x96x146
	40	429	0,5	16	16		130	22	13	SLP-40EE2	SLP-40EE2S1	131x96x146
	40	429	0,5	16	16	13	120	22	13	SLP-40VE2	SLP-40VE2S1	131x96x146
2"	50	686	0,5	16	16	13	80	22	13	SLP-50E2	SLP-50E2S1	165x120x167
	50	686	0,5	16	16		130	22	13	SLP-50EE2	SLP-50EE2S1	165x120x167
	50	686	0,5	16	16	13	120	22	13	SLP-50VE2	SLP-50VE2S1	165x120x167
Flange 4 ports	25	172	0,5	16	16	13	80	22	13	-	SLPFEE2-25LS1	134x110x160
	25	172	0,5	16	16		130	22	13	-	SLPFEE2-25LS1	134x110x160
	25	172	0,5	16	16	13	120	22	13	-	SLPFVE2-25LS1	134x110x160
	35	315	0,5	16	16	13	80	22	13	-	SLPFEE2-35LS1	160x135x175
	35	315	0,5	16	16		130	22	13	-	SLPFEE2-35LS1	160x135x175
	35	315	0,5	16	16	13	120	22	13	-	SLPFVE2-35LS1	160x135x175
	40	429	0,5	16	16	13	80	22	13	-	SLPFEE2-40LS1	160x145x180
	40	429	0,5	16	16		130	22	13	-	SLPFEE2-40LS1	160x145x180
	40	429	0,5	16	16	13	120	22	13	-	SLPFVE2-40LS1	160x145x180
	50	686	0,5	12	12	13	80	22	13	-	SLPFEE2-50LS1	200x160x207
	50	686	0,5	12	12		130	22	13	-	SLPFEE2-50LS1	200x160x207
	50	686	0,5	12	12	13	120	22	13	-	SLPFVE2-50LS1	200x160x207
	65	744	0,5	12	12	8	80	33	20	-	SLPFEE2-65LS1	250x185x250
	65	744	0,5	12	12		120	33	20	-	SLPFEE2-65LS1	250x185x250
	65	744	0,5	12	12	8	120	33	20	-	SLPFVE2-65LS1	250x185x250
	80	1144	0,5	12	12	8	80	33	20	-	SLPFEE2-80LS1	270x202x262
	80	1144	0,5	12	12		120	33	20	-	SLPFEE2-80LS1	270x202x262
	80	1144	0,5	12	12	8	120	33	20	-	SLPFVE2-80LS1	270x202x262
	100	1830	0,5	12	12	8	80	33	20	-	SLPFEE2-100LS1	342x222x287
100	1830	0,5	12	12		120	33	20	-	SLPFEE2-100LS1	342x222x287	
100	1830	0,5	12	12	8	120	33	20	-	SLPFVE2-100LS1	342x222x287	

# SLP-Series: 2/2 way Pilot Operated Solenoid Valves



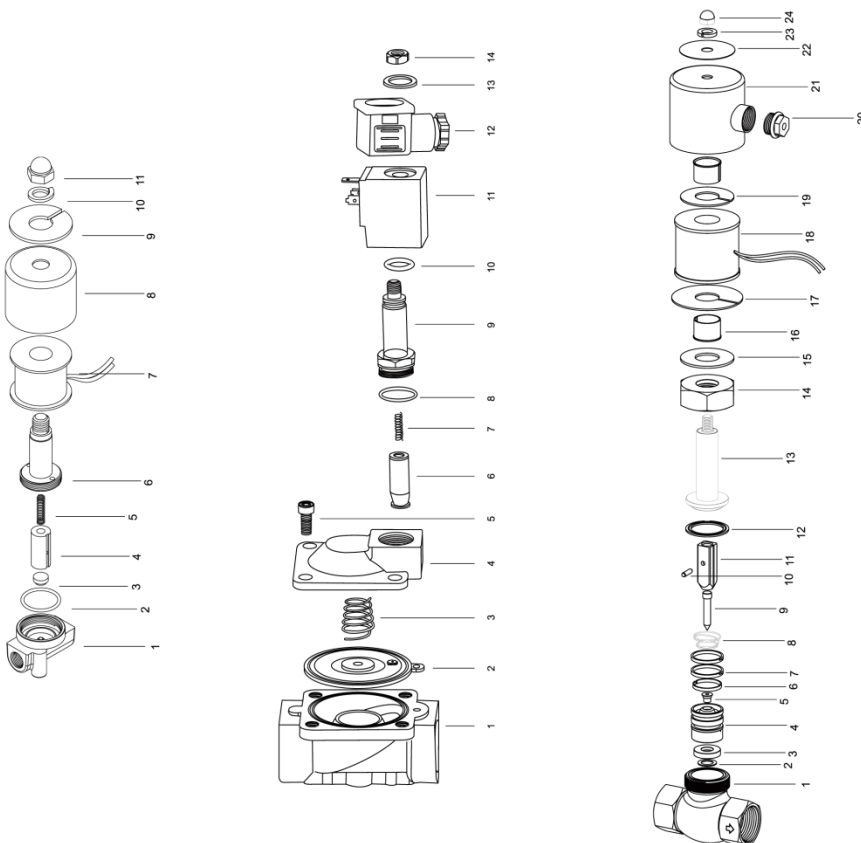
1/8" - 1/4" small size Orifice (A)	1/8" - 1/4" Medium size Orifice (B)	Large size Orifice (C)
------------------------------------	-------------------------------------	------------------------



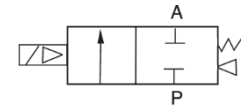
Item	Designation A
1	Valve Body
2	O-ring
3	Seal pad
4	Pilot
5	Spring
6	Armature
7	Coil
8	Steel washer
9	Washer
10	Spring washer
11	Nut

Item	Designation C
1	Valve body
2	Diaphragm
3	Diaphragm spring
4	Valve cover
5	Hexagon screw
6	Pilot unit
7	Plunger spring
8	O-ring
9	Plunger tube-assembly
10	O-ring
11	Coil
12	Connector
13	Gasket
14	Lock nut

Item	Designation B
1	Valve body
2	Washer
3	Seal Pad
4	Valve core
5	Seal
6	Gasket
7	Guide ring
8	Spring
9	Valve needle
10	Pin
11	Armature
12	Seal ring
13	Static armature
14	Nut
15	Gasket
16	Bushing
17	Steel plate
18	Coil
19	Steel plate
20	Nut
21	Steel cover
22	Min plate
23	Spring washer
24	Nut



## ZS-Series: 2/2 way Pilot Solenoid Valve



### TECHNICAL SPECIFICATIONS

Media:	Water, light oil, air
Temperature range:	-10°C -> +80°C
Ambient temperature:	-10°C -> +50°C
Body Material:	Brass or SS316

### Ordering information

Series	Port size DN / NPS	Seal Compound	Voltage	Orifice (mm)	Valve Body Material	Function
ZS	06: 1/8"	Blanc: NBR	E1 = 110 AC	2.5L : 2.5	Blanco: Brass	Blanco: NC
	08: 1/4"	V: Viton	E2 = 230 AC	3L : 3.0	S1: SS316	H: NO
	10: 3/8"	E: EPDM	E3 = 380 AC	4L : 4.0	S2: SS304	
	15: 1/2"	G: Silicon	E4 = 24 DC	5L : 5.0		
	20: 3/4"		E5 = 12 DC	6L : 6.0		
	25: 1"		E7 = 24 AC	7.5L : 7.5		
	35: 1-1/4"		E8 = 110 DC	10L : 10.0		
	40: 1-1/2"		E9 = 48 DC	16L : 16.0		
	50: 2"			20L : 20.0		
	F: flange			25L : 25.0		
				32L : 32.0		
				40L : 40.0		
			50L : 50.0			

**Remark:** Silicon seal (G) only for orifice > 25mm

#### Example:

**ZS06E1-3L** => ZS Series ZS, 2 port, 2 positions, 1/8" port size, NBR seal, 110VAC, orifice 3mm, brass body valve , normal closed

**ZS10VE2-16LS2H** => ZS Series, 2 port, 2 positions, 3/8" port size, Viton seal, 220VAC, orifice 13mm, SS body valve , normal open

#### Product features

- Multiple seals for different medium.
- Wide size range from 1/8" to 2", with both thread and **flanged** connection.
- Diaphragm pilot solenoid operated valve with low working pressure.

ZS valves start working at zero differential pressure, the ZS series solenoid valve have a completely range of solenoid valves sizes from 1/8" to 2", with voltage coils available for 220VAC, 110VAC, 380VAC, 24VDC, 12VDC, 36VAC, 24VAC, in stainless steel & brass body and N.C. and N.O. type. ZS valve are available in thread connection and flange connecting. With different seals, this series solenoid valves could be used for many conditions, especially air and water system.



# ZS-Series: 2/2 way Pilot Solenoid Valve

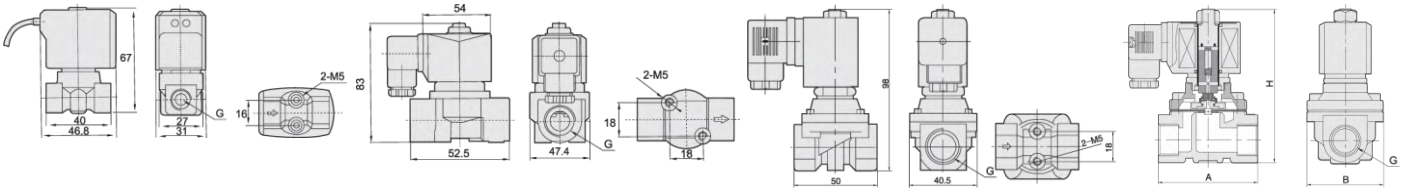


Port size	Orifice (mm)	Flow (kv) L/min	ΔP (Bar)							Max Medium Temp. (°C)	Power		230VAC 50/60Hz		Main dimension
			Min. Pressure	Max. working pressure							230VAC	24VDC			
				Air/Gas		Liquid / Hot Water		light oil ≤ 20CSTT							
				AC	DC	AC	DC	AC	DC		Brass	Stainless Steel	Length - width - height		
1/8"	2,5	3,29	0	7	5	7	5	7	5	80	13	8,5	ZS06E2-2.5L	ZS06E2-2.5LS2	50x40.5x98
	2,5	3,29	0	7	5	7	5	-	-	120	13	8,5	ZS06EE2-2.5L	ZS06EE2-2.5LS2	50x40.5x98
	2,5	3,29	0	7	5	7	5	7	5	120	13	8,5	ZS06VE2-2.5L	ZS06VE2-2.5LS2	50x40.5x98
1/4"	2,5	3,29	0	7	5	7	5	7	5	80	13	8,5	ZS08E2-2.5L	ZS08E2-2.5LS2	50x40.5x98
	2,5	3,29	0	7	5	7	5	-	-	120	13	8,5	ZS08EE2-2.5L	ZS08EE2-2.5LS2	50x40.5x98
	2,5	3,29	0	7	5	7	5	7	5	120	13	8,5	ZS06VE2-2.5L	ZS08VE2-2.5LS2	50x40.5x98
	10	14,3	0	20	16	20	16	20	16	80	22	13	ZS08E2-10L	-	50x40.5x98
	10	14,3	0	20	16	20	16	-	-	120	22	13	ZS08E E2-10L	-	50x40.5x98
10	14,3	0	20	16	20	16	20	16	120	22	13	ZS08VE2-10L	-	50x40.5x98	
3/8"	4	8,58	0	8	5	8	5	5	5	80	33	20	ZS10E2-4L	ZS10E2-4LS2	50x40.5x98
	4	8,58	0	8	5	8	5	-	-	120	33	20	ZS10EE2-4L	ZS10EE2-4LS2	50x40.5x98
	4	8,58	0	8	5	8	5	5	5	120	33	20	ZS10VE2-4L	ZS10VE2-4LS2	50x40.5x98
	10	25,74	0	20	16	20	16	20	16	80	22	13	ZS10E2-10L	-	69x57x106
	10	25,74	0	20	16	20	16	-	-	120	22	13	ZS10EE2-10L	-	69x57x106
	10	25,74	0	20	16	20	16	20	16	120	22	13	ZS10VE2-10L	-	69x57x106
	16	68,64	0	10	6	10	6	7	4	80	33	20	ZS10E2-16L	ZS10E2-16LS2	69x57x106
	16	68,64	0	10	6	10	6	-	-	120	33	20	ZS10EE2-16L	ZS10EE2-16LS2	69x57x106
	16	68,64	0	10	6	10	6	7	4	120	33	20	ZS10VE2-16L	ZS10VE2-16LS2	69x57x106
1/2"	10	27	0	20	16	20	16	20	16	80	22	13	ZS15E2-10L	-	69x57x106
	10	27	0	20	16	20	16	-	-	130	22	13	ZS15EE2-10L	-	69x57x106
	10	27	0	20	16	20	16	20	16	120	22	13	ZS15VE2-10L	-	69x57x106
	16	68,64	0	10	6	10	6	7	4	80	33	20	ZS15E2:16L	ZS15E2-16LS2	69x57x106
	16	68,64	0	10	6	10	6	-	-	130	33	20	ZS15EE2-16L	ZS15EE2-16LS2	69x57x106
3/4"	20	109	0	10	6	10	6	7	4	80	33	20	ZS-20E2	ZS-20E2S2	73x57x114
	20	109	0	10	6	10	6	-	-	130	33	20	ZS-20E E2	ZS-20EE2S2	73x57x114
	20	109	0	10	6	10	6	7	4	120	33	20	ZS-20VE2	ZS-20VE2S2	73x57x114
1"	25	172	0	10	6	10	6	7	4	80	33	20	ZS-25E2	ZS-25E2S2	99x77x121
	25	172	0	10	6	10	6	-	-	120	33	20	ZS-25EE2	ZS-25EE2S2	99x77x121
	25	172	0	10	6	10	6	7	4	120	33	20	ZS-25VE2	ZS-25VE2S2	99x77x121
	25	172	0	10	6	3	3	-	-	120	33	20	ZS-25GE E2	ZS-25GE2S2	99x77x121
1-1/4"	35	343	0	10	6	10	6	7	4	80	70	40	ZS-35E2	ZS-35E2S2	112x86.5x150
	35	343	0	10	6	10	-	-	-	120	70	40	ZS-35EE2	ZS-35EE2S2	112x86.5x150
	35	343	0	10	6	10	6	7	4	120	70	40	ZS-35VE2	ZS-35VE2S2	112x86.5x150
1-1/2"	40	415	0	10	6	10	6	7	4	80	70	40	ZS-40E2	ZS-40E2S2	123x94x160
	40	415	0	10	6	10	-	-	-	120	70	40	ZS-40EE2	ZS-40EE2S2	123x94x160
	40	415	0	10	6	10	6	7	7	120	70	40	ZS-40VE2	ZS-40VE2S2	123x94x160
2"	50	686	0	10	6	10	6	7	4	80	70	40	ZS-50E2	ZS-50E2S2	168x123x183
	50	686	0	10	6	10	-	-	-	120	70	40	ZS-50E E2	ZS-50EE2S2	168x123x183
	50	686	0	10	6	10	6	7	4	120	70	40	ZS-50VE2	ZS-50VE2S2	168x123x183
Flange 4 mounting holes	25	172	0	10	6	10	6	7	4	80	70	40	-	ZSFE2-25LS2	140x115x160
	25	172	0	10	6	10	-	-	-	130	70	40	-	ZSFEE2-25LS2	140x115x160
	25	172	0	10	6	10	6	7	4	120	70	40	-	ZSFVE2-25LS2	140x115x160
	32	343	0	10	6	10	6	7	4	80	70	40	-	ZSFE2-32LS2	152x135x215
	32	343	0	10	6	10	-	-	-	130	70	40	-	ZSFEE2-32LS2	152x135x215
	32	343	0	10	6	10	6	7	4	120	70	40	-	ZSFVE2-32LS2	152x135x215
	40	415	0	10	6	10	6	7	4	80	70	40	-	ZSFE2-40LS2	152x135x215
	40	415	0	10	6	10	-	-	-	130	70	40	-	ZSFEE2-40LS2	152x135x215
	40	415	0	10	6	10	6	7	4	120	70	40	-	ZSFVE2-40LS2	152x135x215
	50	686	0	10	6	10	6	7	4	80	70	40	-	ZSFE2-50LS2	195x160x220
	50	686	0	10	6	10	6	-	-	130	70	40	-	ZSFEE2-50LS2	195x160x220
	50	686	0	10	6	10	6	7	4	120	70	40	-	ZSFVE2-50LS2	195x160x220
	65	744	0	6	5	6	5	3	2	80	55	64	-	ZSFE2-65LS2	250x185x308
	65	744	0	6	5	6	5	-	-	120	55	64	-	ZSFEE2-65LS2	250x185x308
	65	744	0	6	5	6	5	3	2	120	55	64	-	ZSFVE2-65LS2	250x185x308
	80	1144	0	6	5	6	5	3	2	80	55	64	-	ZSFE2-80LS2	270x202x320
	80	1144	0	6	5	6	5	-	-	120	55	64	-	ZSFEE2-80LS2	270x202x320
80	1144	0	6	5	6	5	3	2	120	55	64	-	ZSFVE2-80LS2	270x202x320	
100	1830	0	6	5	6	5	3	2	80	55	64	-	ZSFE2-100LS2	342x222x345	
100	1830	0	6	5	6	5	-	-	120	55	64	-	ZSFEE2-100LS2	342x222x345	
100	1830	0	6	5	6	5	3	2	120	55	64	-	ZSFVE2-100LS2	342x222x345	

# ZS-Series: 2/2 way Pilot Solenoid Valve



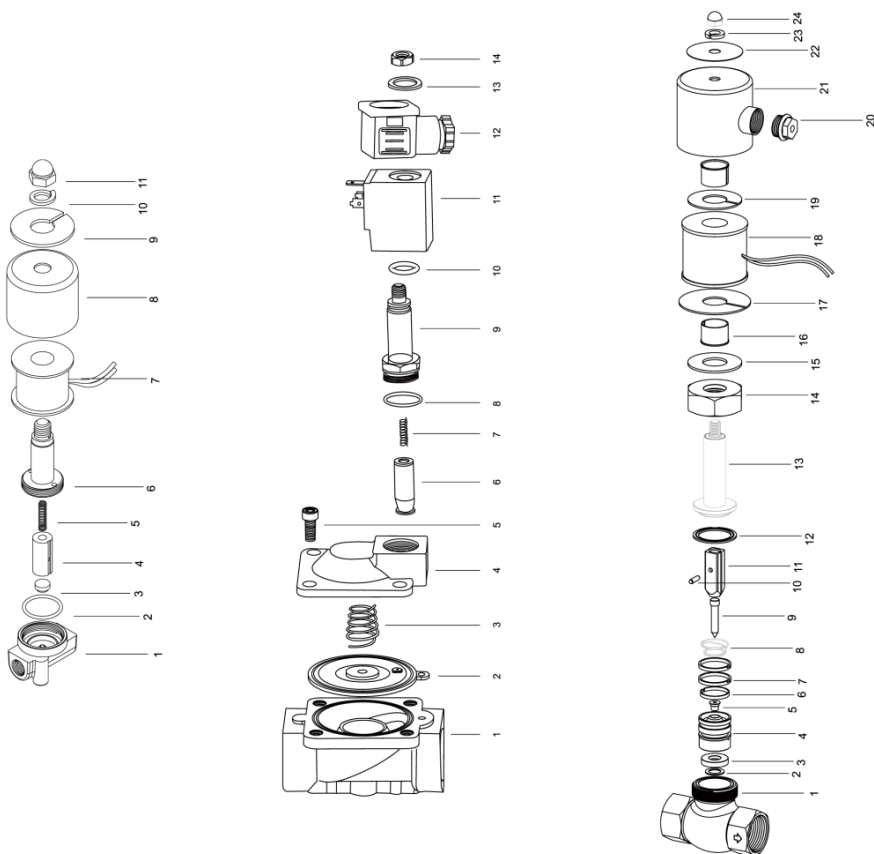
1/8" - 1/4" - Ø 2.5mm (A)	3/8" - Ø 4mm (A)	1/4"-3/8"-1/2" - Ø10mm (B)	Large size Orifice (D)
---------------------------	------------------	----------------------------	------------------------



Item	Designation A
	Valve Body
2	O-ring
3	Seal pad
4	Pilot
5	Spring
6	Armature
7	Coil
8	Steel washer
9	Washer
10	Spring washer
11	Nut

Item	Designation C
1	Valve body
2	Diaphragm
3	Diaphragm spring
4	Valve cover
5	Hexagon screw
6	Pilot unit
7	Plunger spring
8	O-ring
9	Plunger tube-assembly
10	O-ring
11	Coil
12	Connector
13	Gasket
14	Lock nut

Item	Designation B
1	Valve body
2	Washer
3	Seal Pad
4	Valve core
5	Seal
6	Gasket
7	Guide ring
8	Spring
9	Valve needle
10	Pin
11	Armature
12	Seal ring
13	Static armature
14	Nut
15	Gasket
16	Bushing
17	Steel plate
18	Coil
19	Steel plate
20	Nut
21	Steel cover
22	Min plate
23	Spring washer
24	Nut



LIABILITY:

The information available on these pages is provided solely for information purposes regarding LDA Direct (LDA) and the services offered by LDA Direct (LDA). These pages contain no advice.

LDA Direct (LDA) makes all reasonable efforts to ensure that the information on these pages is accurate at the time of inclusion, but at any particular time there may be inaccuracies, omissions or information which is not up-to-date - such as pricing and technical information - and for which LDA Direct (LDA) cannot be held liable.

LDA Direct (LDA) reserves the right to add, delete, correct or otherwise change any part of the information contained on these pages without notice or liability.

With respect to the information available on these pages, LDA Direct (LDA) expressly excludes any representation or warranty (express or implied) to the fullest extent permitted by law. LDA Direct (LDA) accepts no liability for any direct or indirect damages.

Doc. 2014-12

# Visit our technical productwebsite!

Specialised products need specialised knowledge. The LDA team is happy to share this knowledge, because we understand the need of our customers for technical documentation, also outside of our openinghours. That is why we offer a maximum of technical and specialised documentation about our products online.

## *Our engagement, your advantage.*

Through products.LDA.be, you will be able to search for and download technical documentation. If videos about the products are available, these will be accesible by clicking the Youtube button. Do you wish to contact our staff? No problem, there are different ways to reach us. Next to the phone number and email address at the top of the website, you can also use the button "Ask a question about this product" to send your request to LDA.

## About *products.LDA.be*:

### You will find:

- ▲ Technical information for each productcategory
- ▲ Youtube movies wherever possible
- ▲ Downloadable catalogs
- ▲ Downloadable installation instructions
- ▲ Online instructions and sizing software to identify the correct products

### For the future:

- ▲ Our online technical information is continually being adapted and expanded
- ▲ Prices are not online, as the price depends on various technical parameters
- ▲ Understand how our products work, and understand how quality products can save you money
- ▲ Ask your questions to the LDA team!

Stay up to date and follow us on Facebook and LinkedIn!

products.LDA.be

# Visit our webshop!



Standard quality products at a correct price, a short delivery period and a permanent support of our experts: This is what LDA direct has to offer.

## *Our commitment, your advantage.*

Through LDA direct, our customers can choose themselves when to order out of our large standard product range. But there is more. LDA nv commits itself to take into stock all products that appear on LDA direct. This is why we can guarantee (subject to certain exceptions) that all orders that are made before 14h00 on a working day, will be delivered within 1 working day in Belgium, and within 2 working days in the Netherlands and Luxembourg. For this a standard transport fee of 15€ (excl. TVA) is charged, regardless the size of the order or the location in the BeNeLux!

You can also contact LDA direct on +32 (0)2 669 68 00 or through [LDAdirect@LDA.be](mailto:LDAdirect@LDA.be).

### Already available:

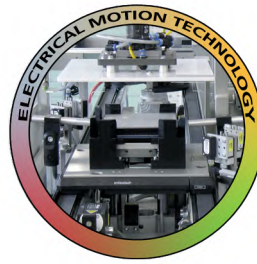
- ▲ Fluid valves
- ▲ DIN Connectors
- ▲ Tubing
- ▲ Fittings
- ▲ Air treatment
- ▲ New product ranges are continuously being added

### Webshop advantages:

- ▲ Focus on BeNeLux, but price requests from other countries are also processed
- ▲ Correct pricing
- ▲ Quality products, all on stock
- ▲ BE deliveries within 1 workday
- ▲ NL & LUX deliveries within 2 workdays

Follow us on twitter (@LDA direct) in order to be kept up to date on the changes of our online product ranges!

[www.LDAdirect.be](http://www.LDAdirect.be)



*We look forward to your application.*

**LDA NV  
Hoge Buizen 53  
1980 Eppegem  
Belgium**

**Tel. +32 (0)2-669 68 00  
Mail: LDAdirect@LDA.be**

**[www.LDAdirect.be](http://www.LDAdirect.be)**